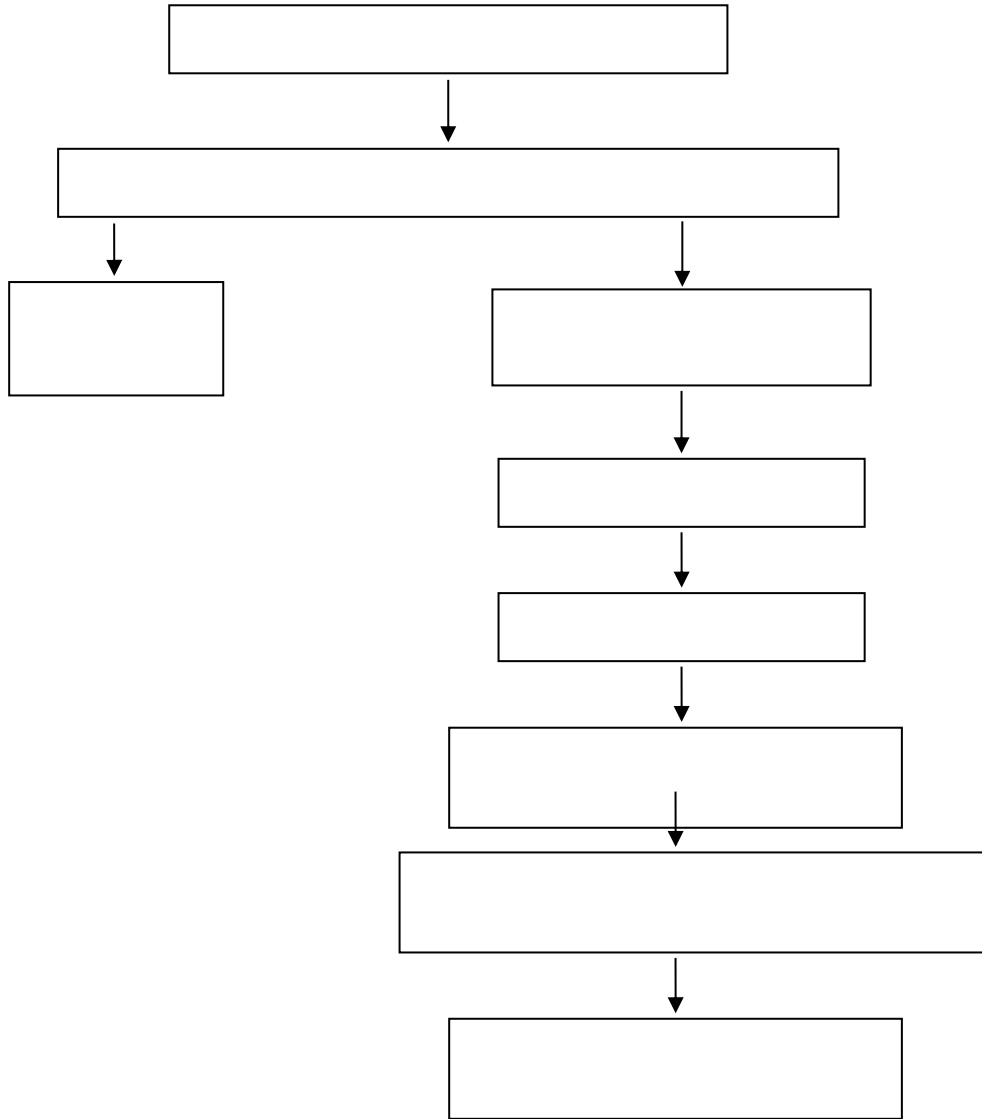


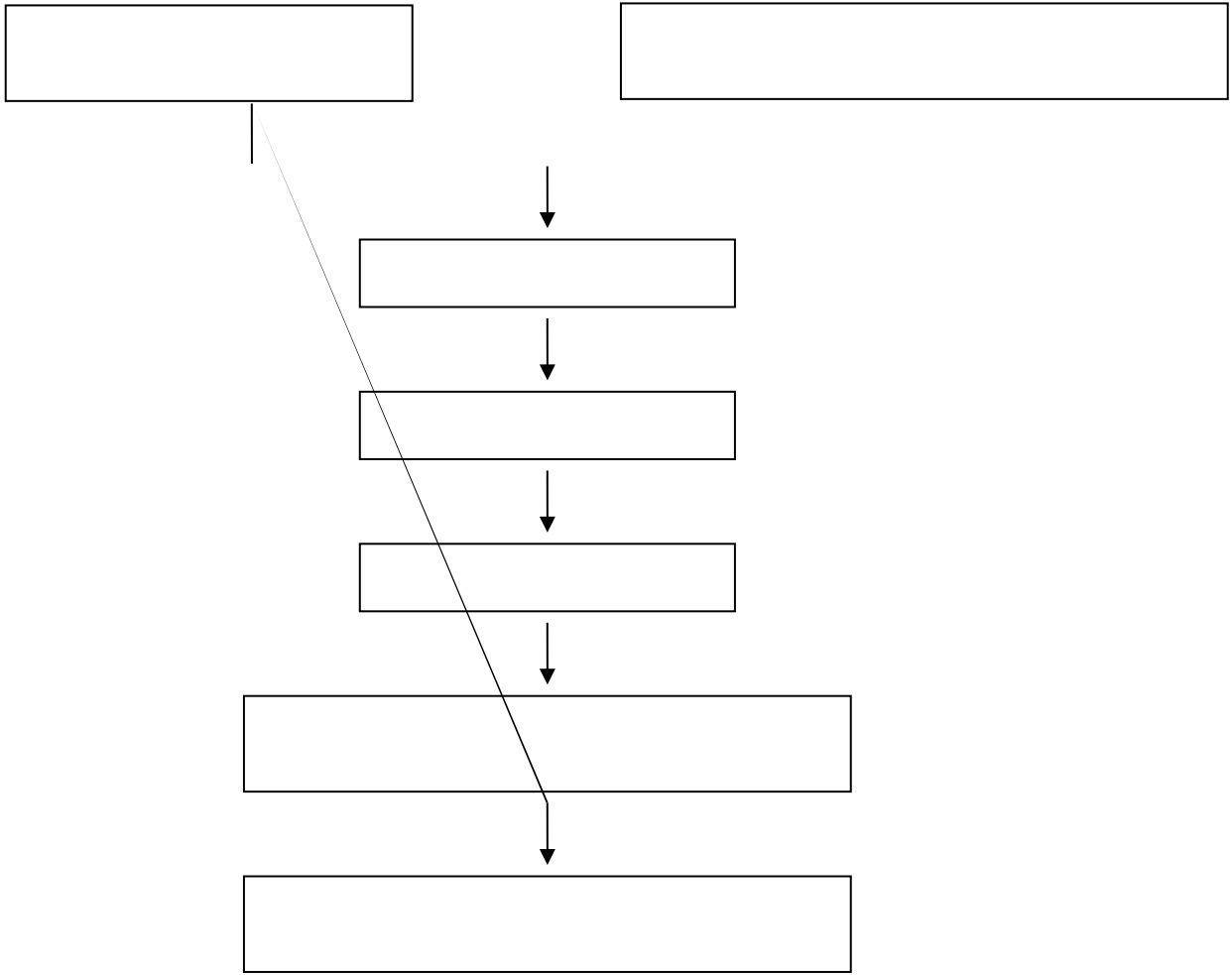
# 目 录

1		
2		
3		
4		
5		
6		
7		
8		
9		
10		
11		
12		
13		
14		
15		
16		
17		
18		
19		
20		
21		
22		
23		
24		
25		
26		
27		
28		
29		
30		

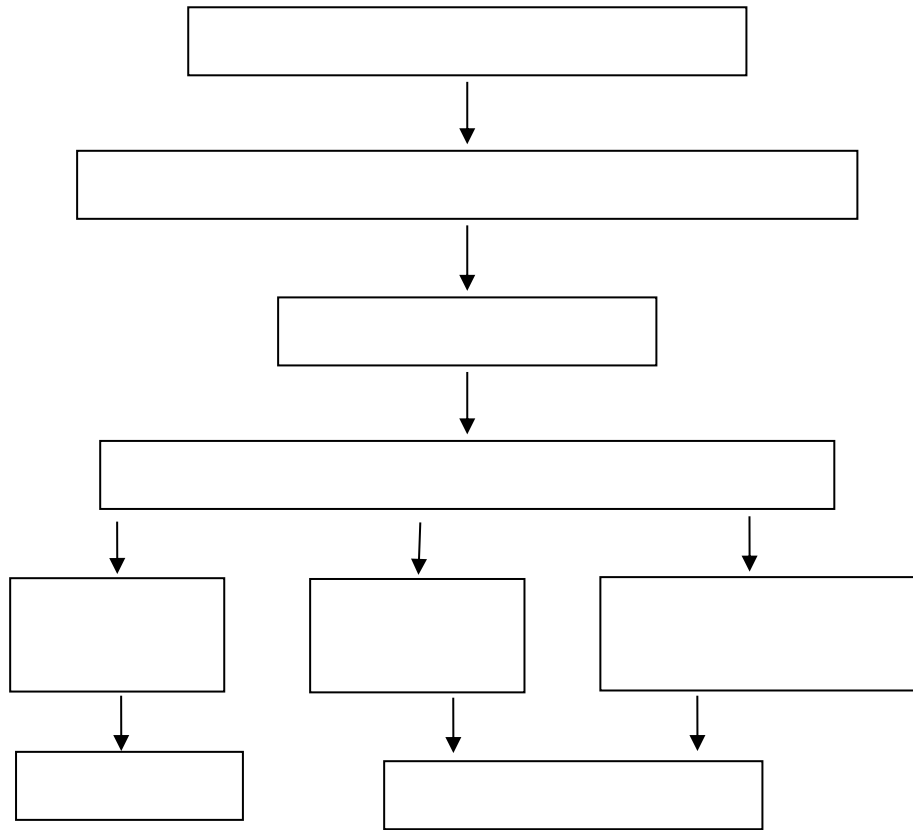
# 学生转专业管理流程



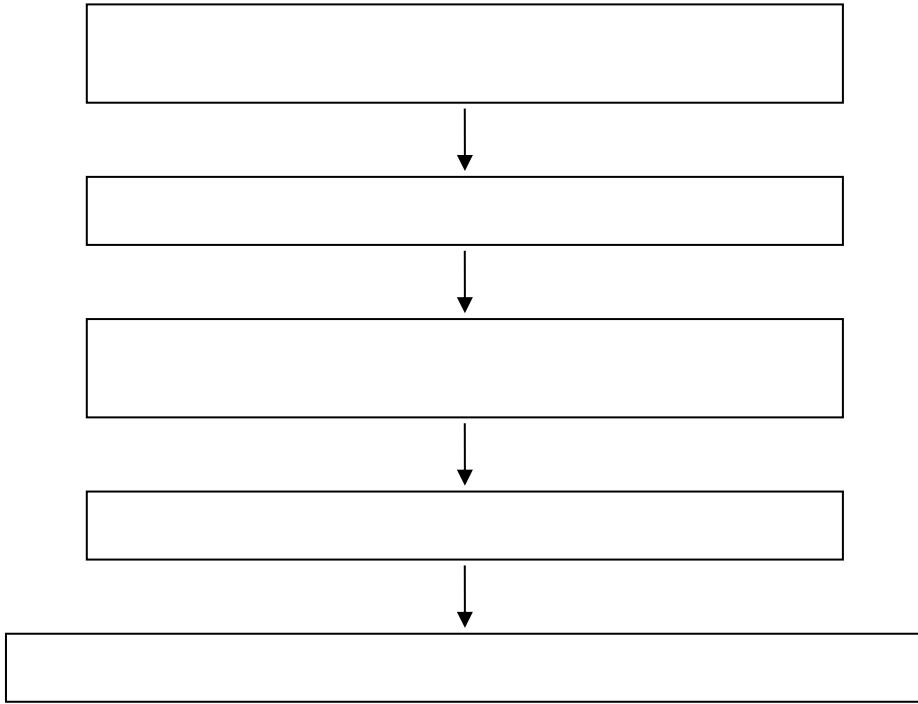
# 学生退学管理流程图



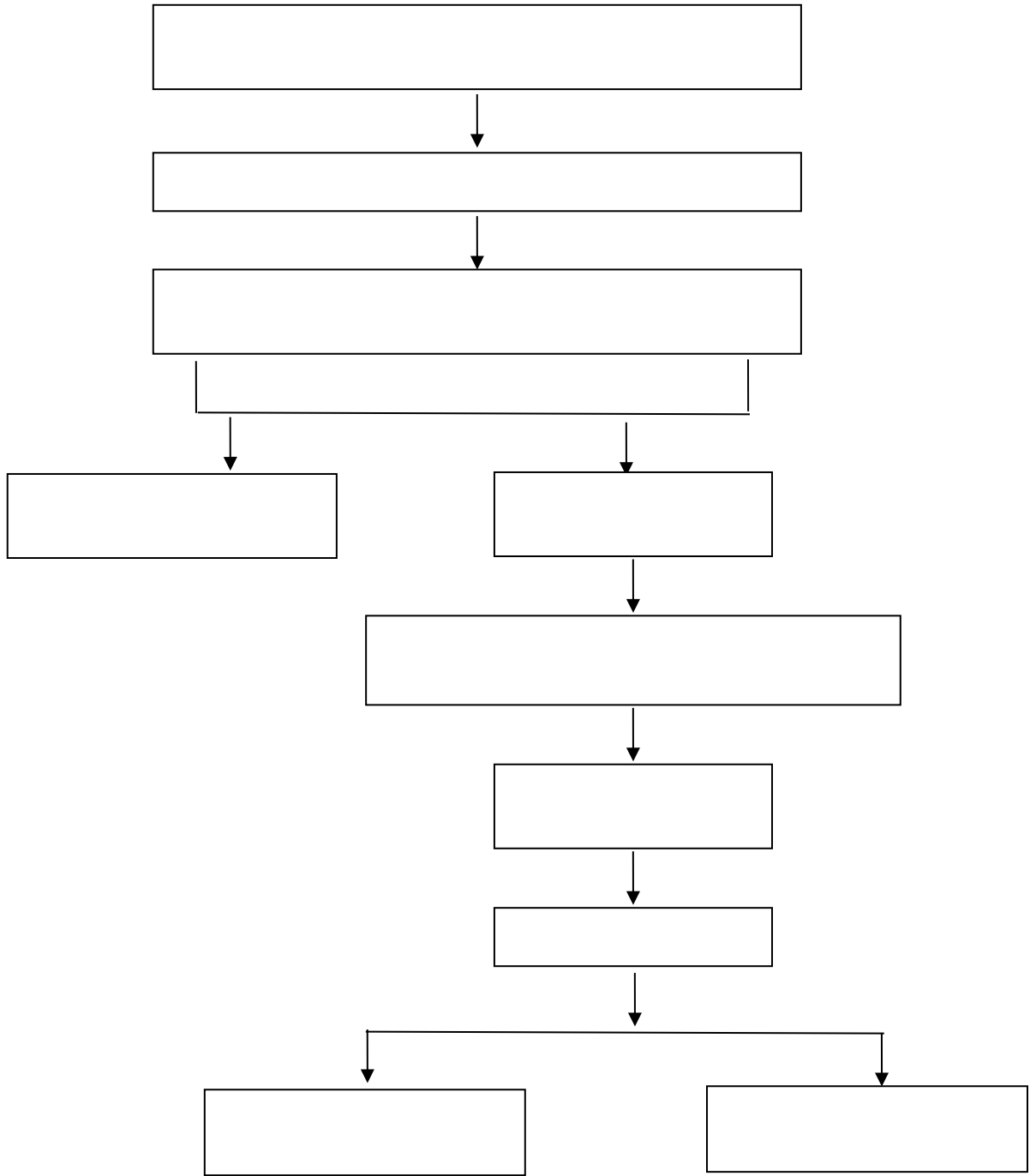
# 学生休学、保留学籍、复学、重新编级流程



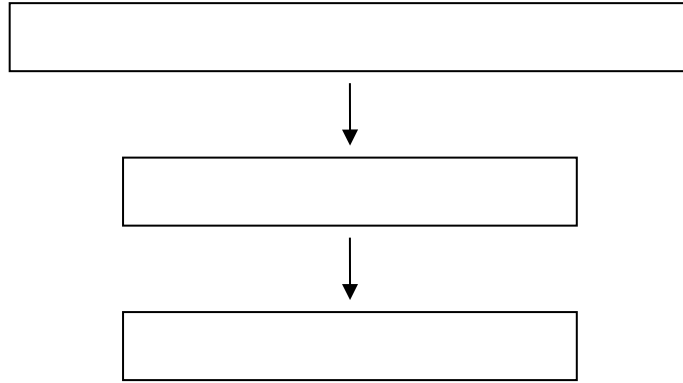
## 学生课程重新学习管理流程



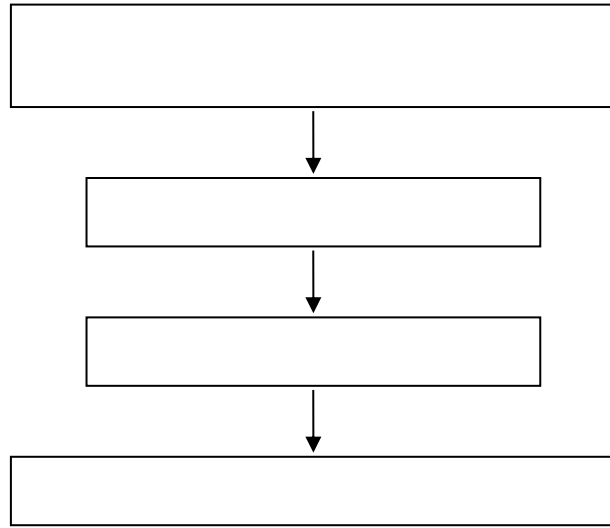
# 成绩管理流程



## 学生课程缓考管理流程

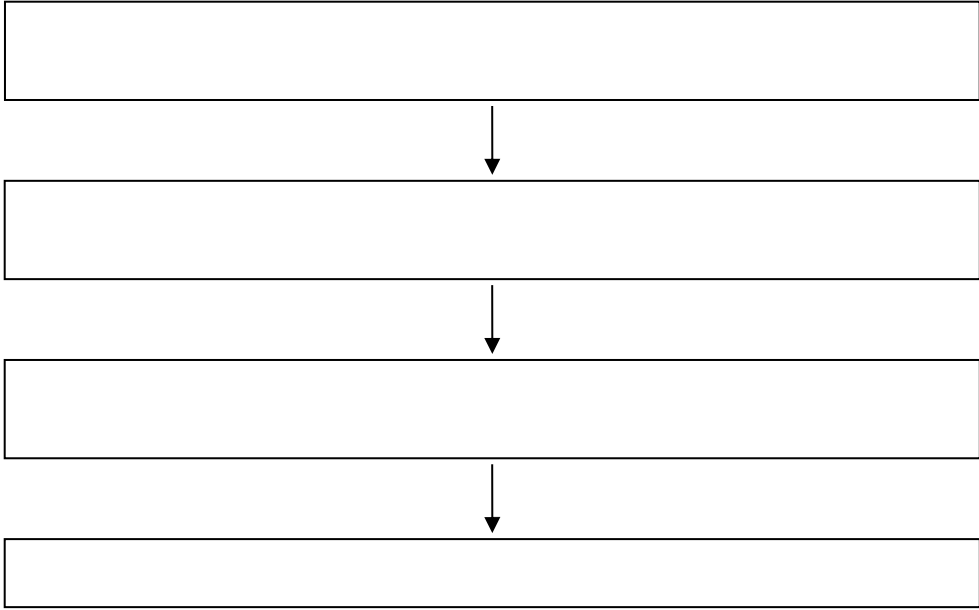


## 交流生学分认定办理流程



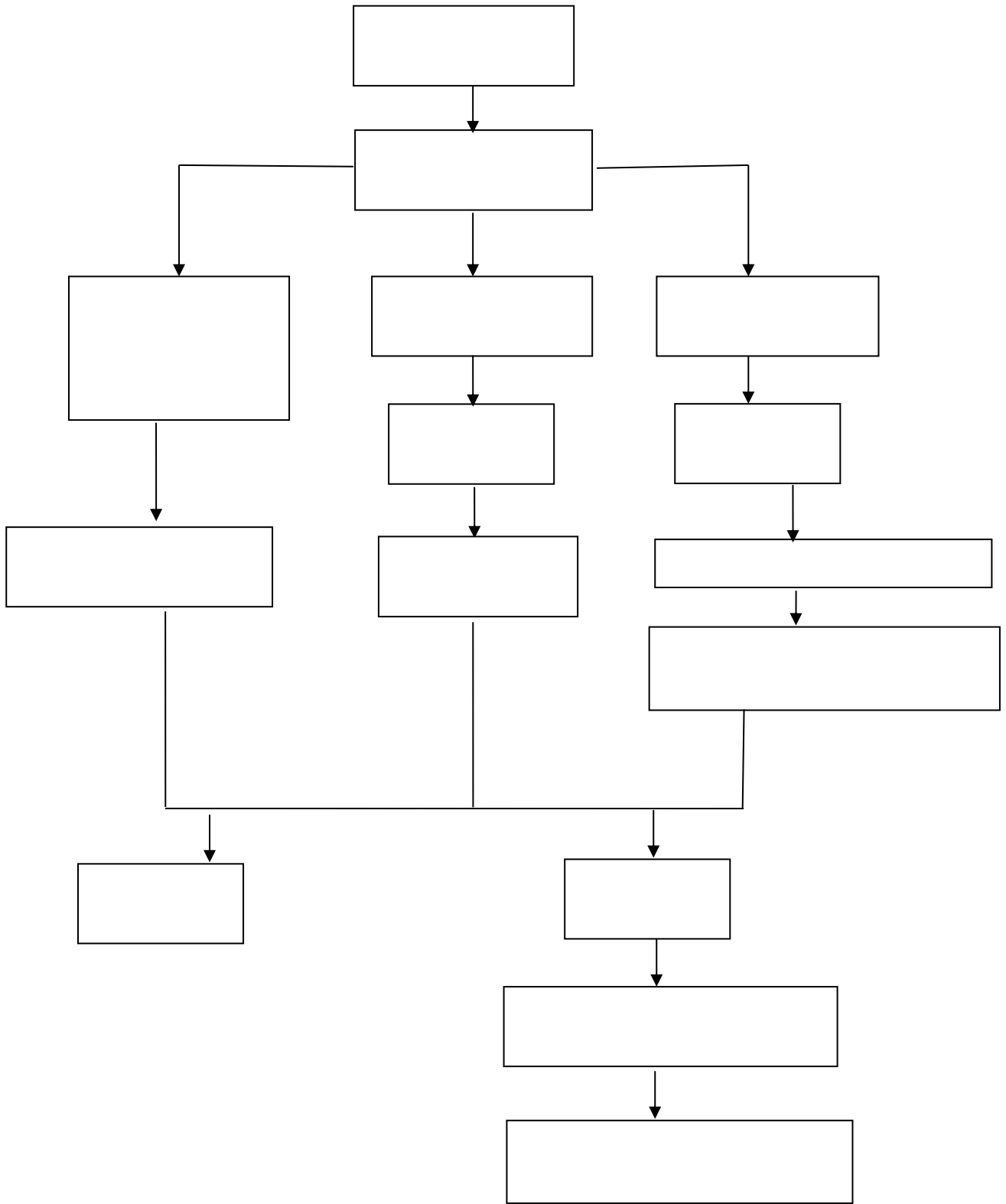


## 学生申请创新学分办理流程

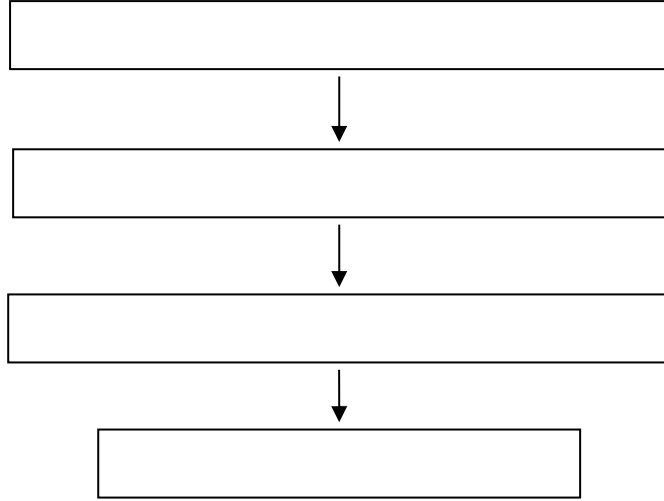




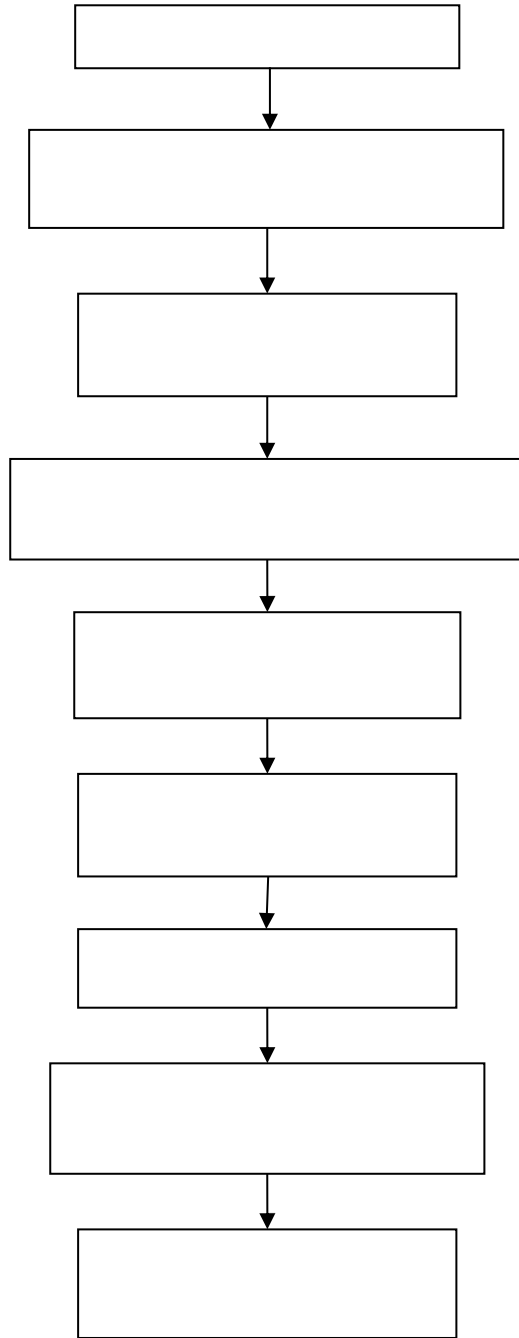
# 学生考试违纪处分流程图



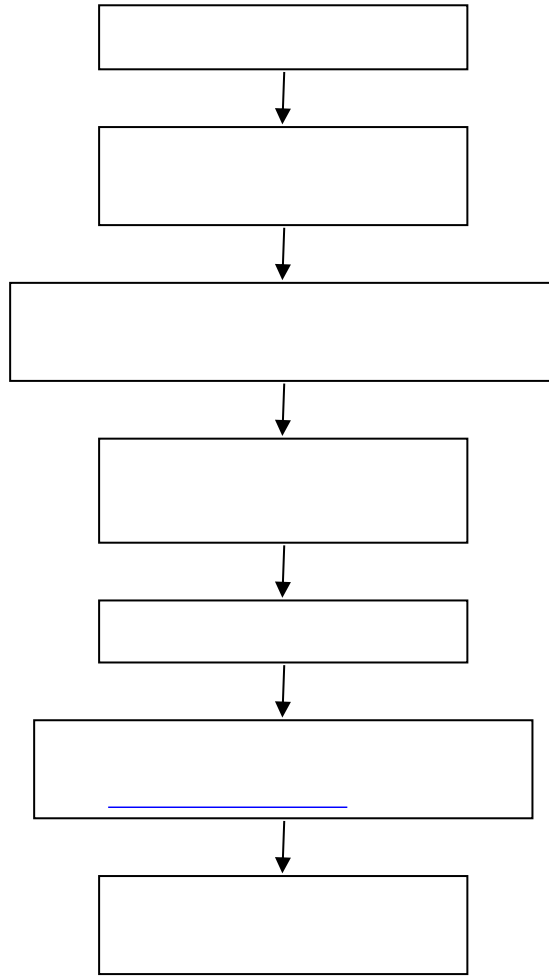
# 公共课程试卷送印流程



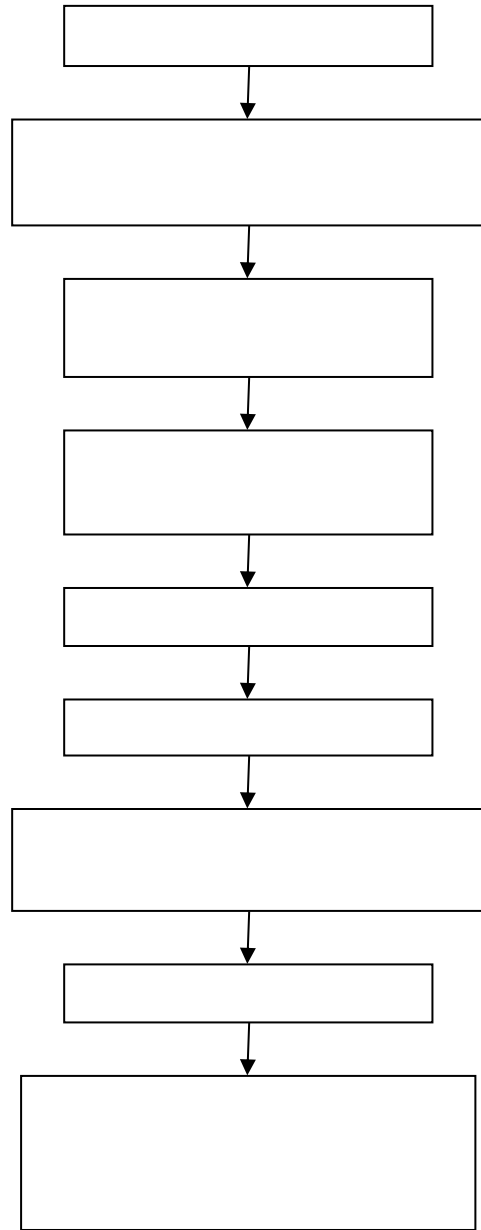
## 大学英语四、六级考试流程



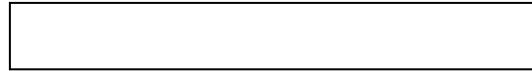
# 全国计算机等级考试流程



# 福建省高校计算机等级考试流程



## 课程表编排流程图





# 公共选修课报课、选课流程图

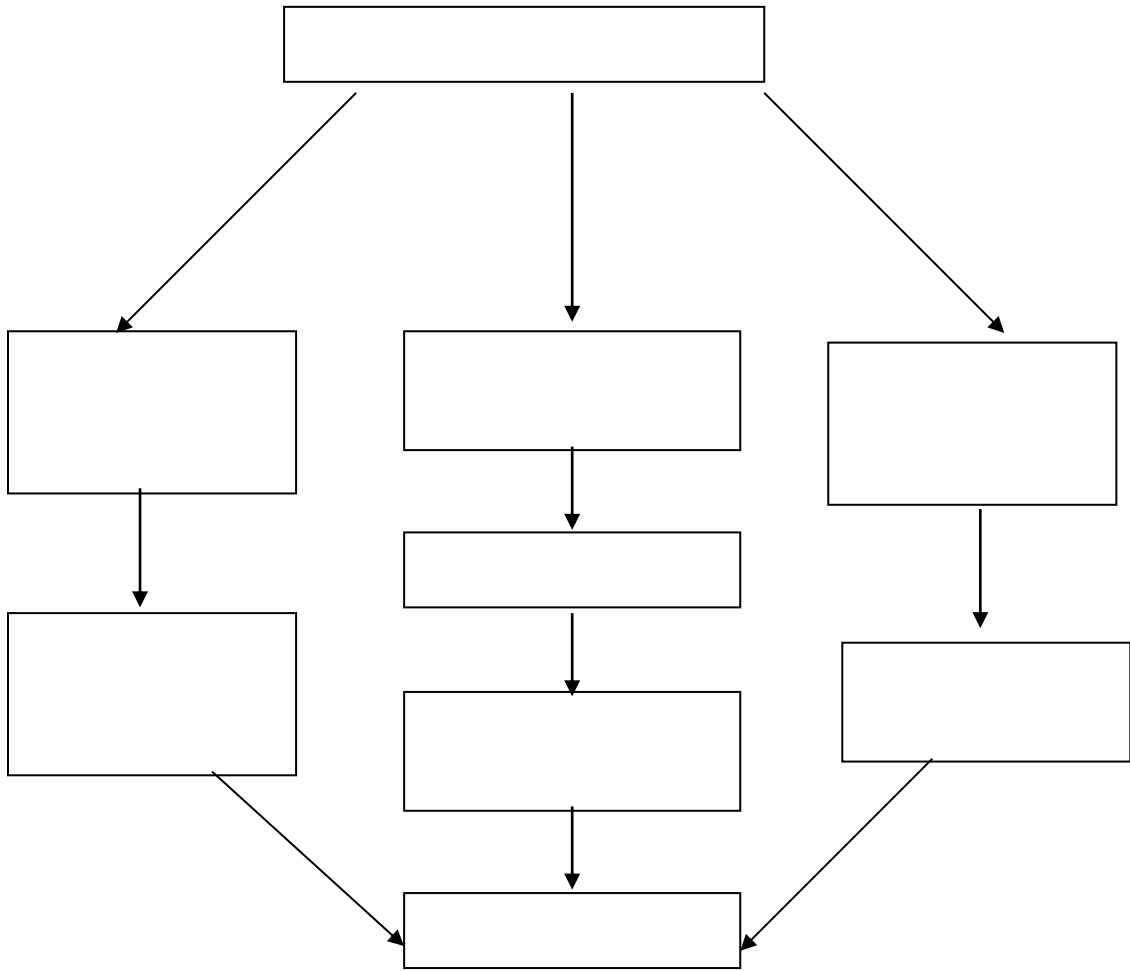
时间安排

教师报课

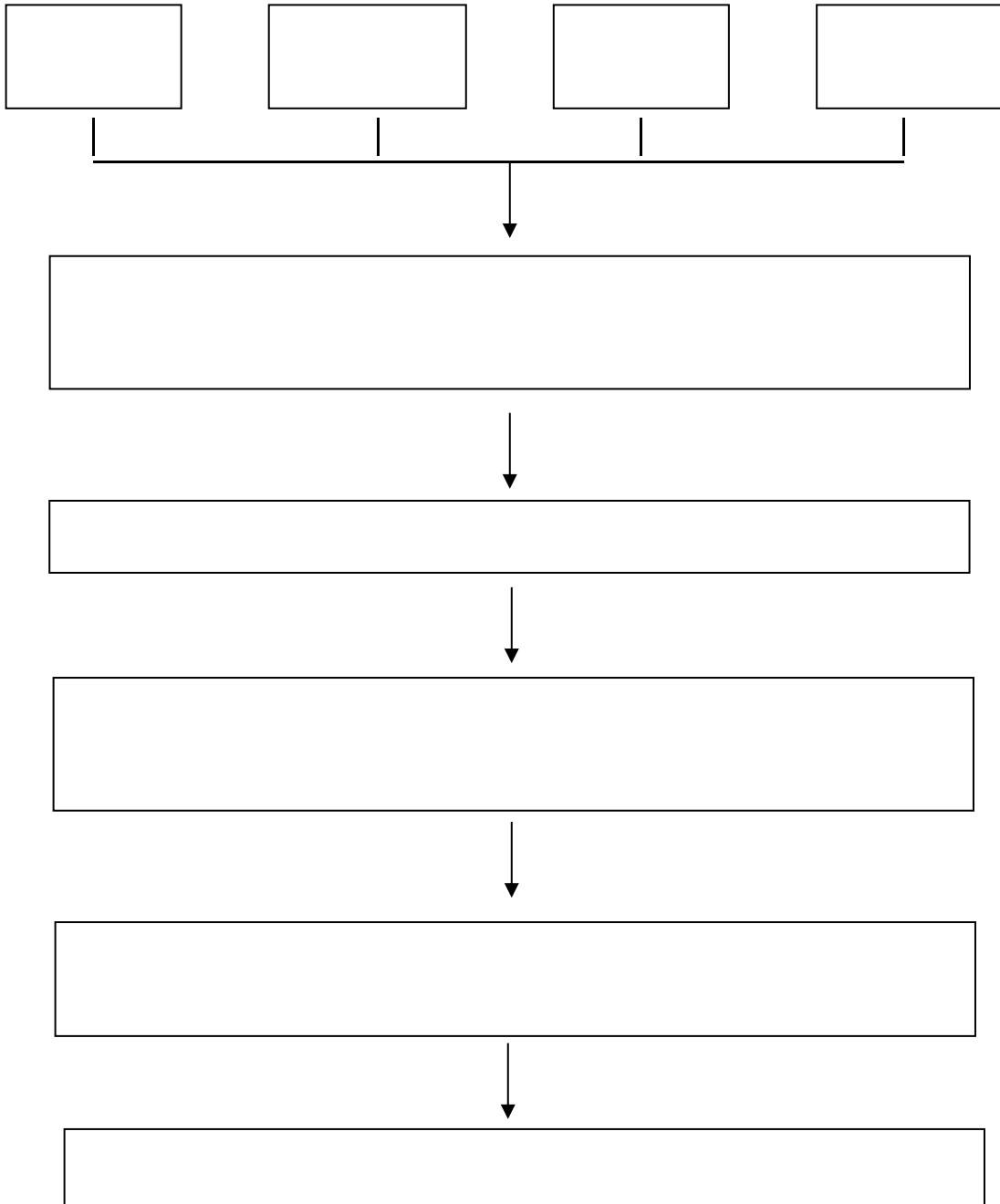
学生选课

责任单位

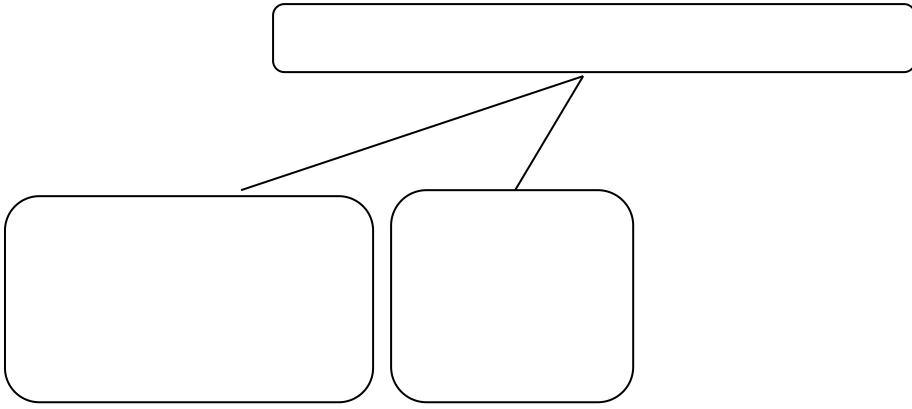
# 教室管理相关流程图



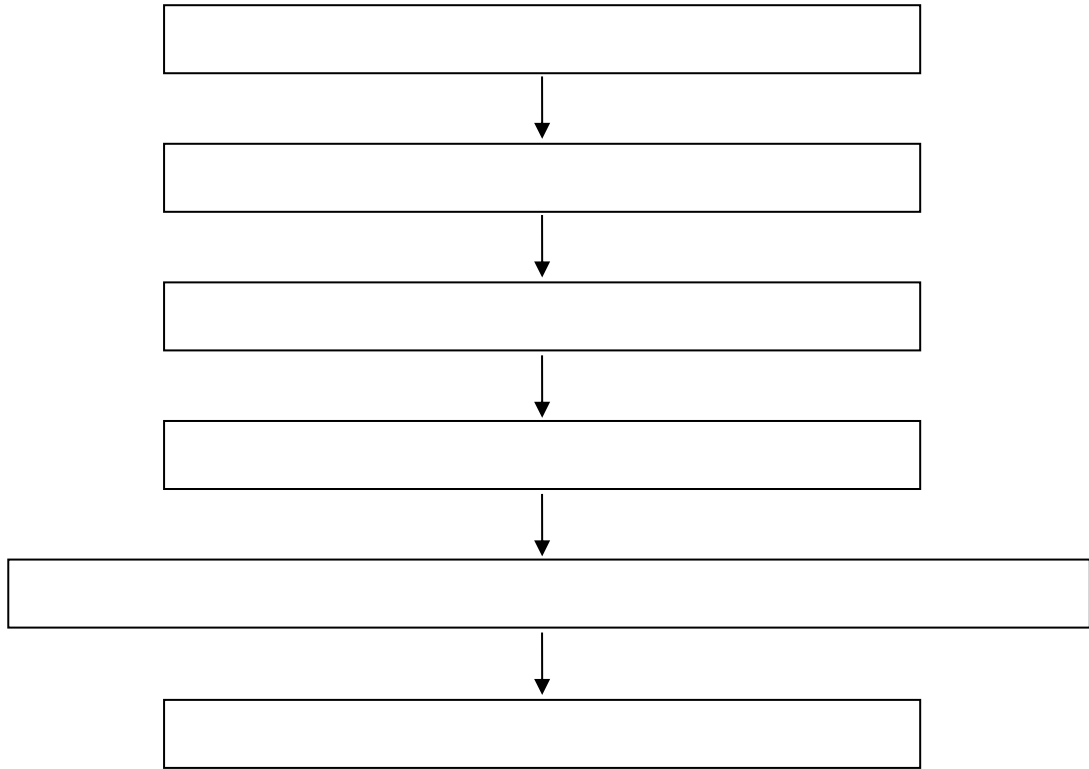
# 教学事故认定与处理流程图



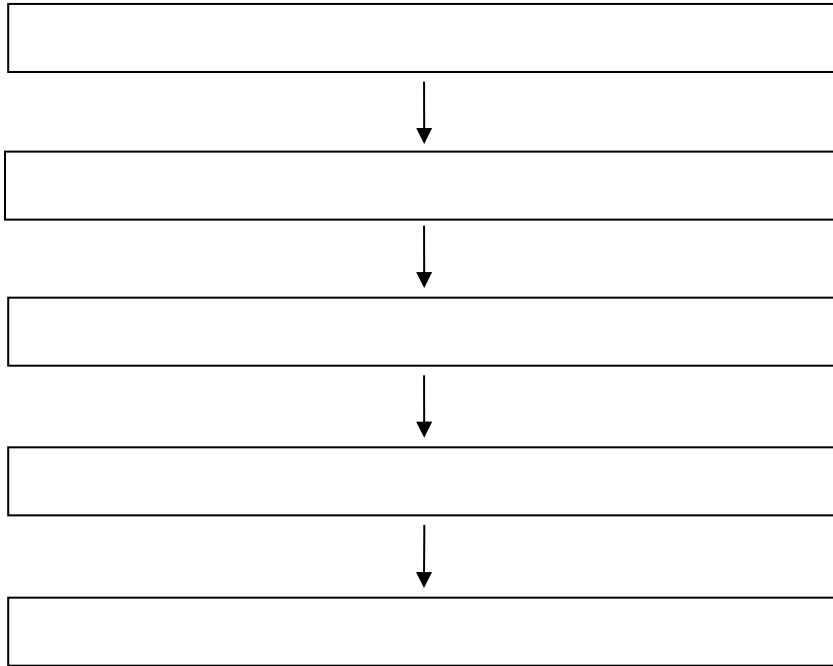
# 普通高等教育学士学位授予流程图



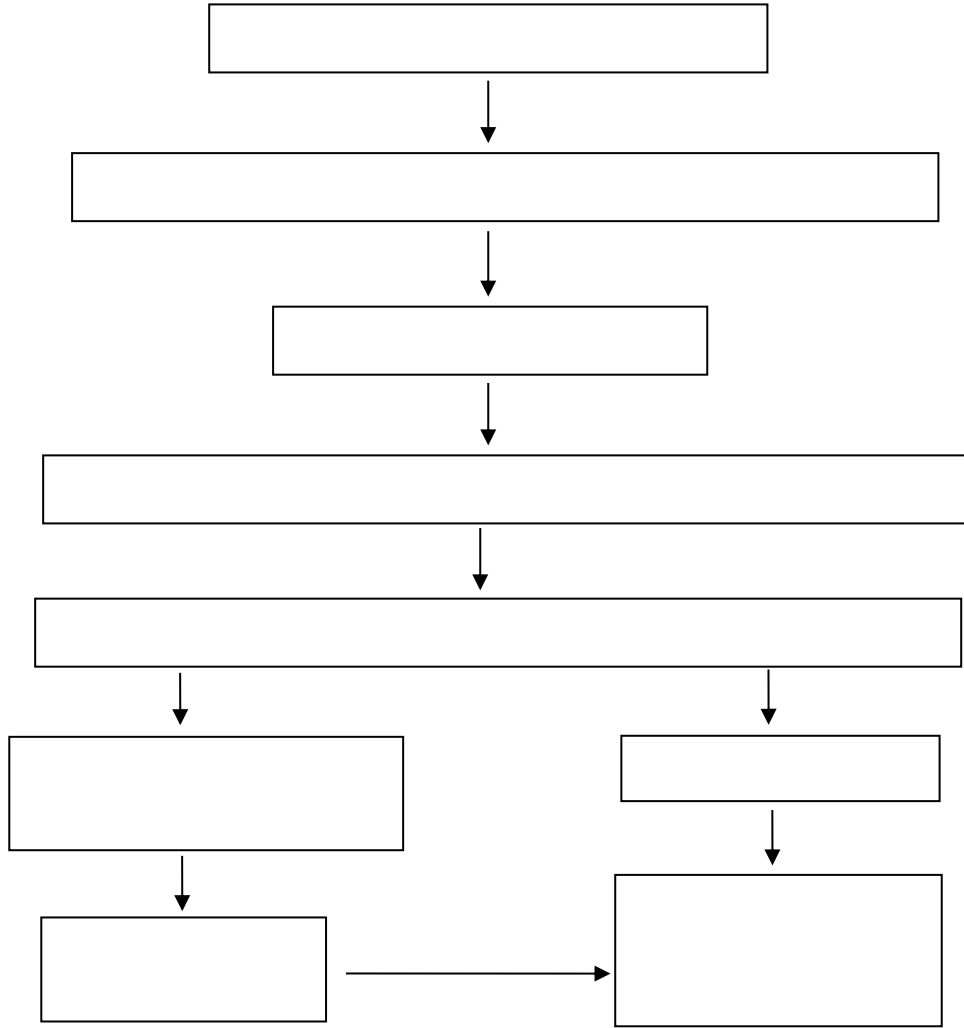
## 交流生面试组织流程



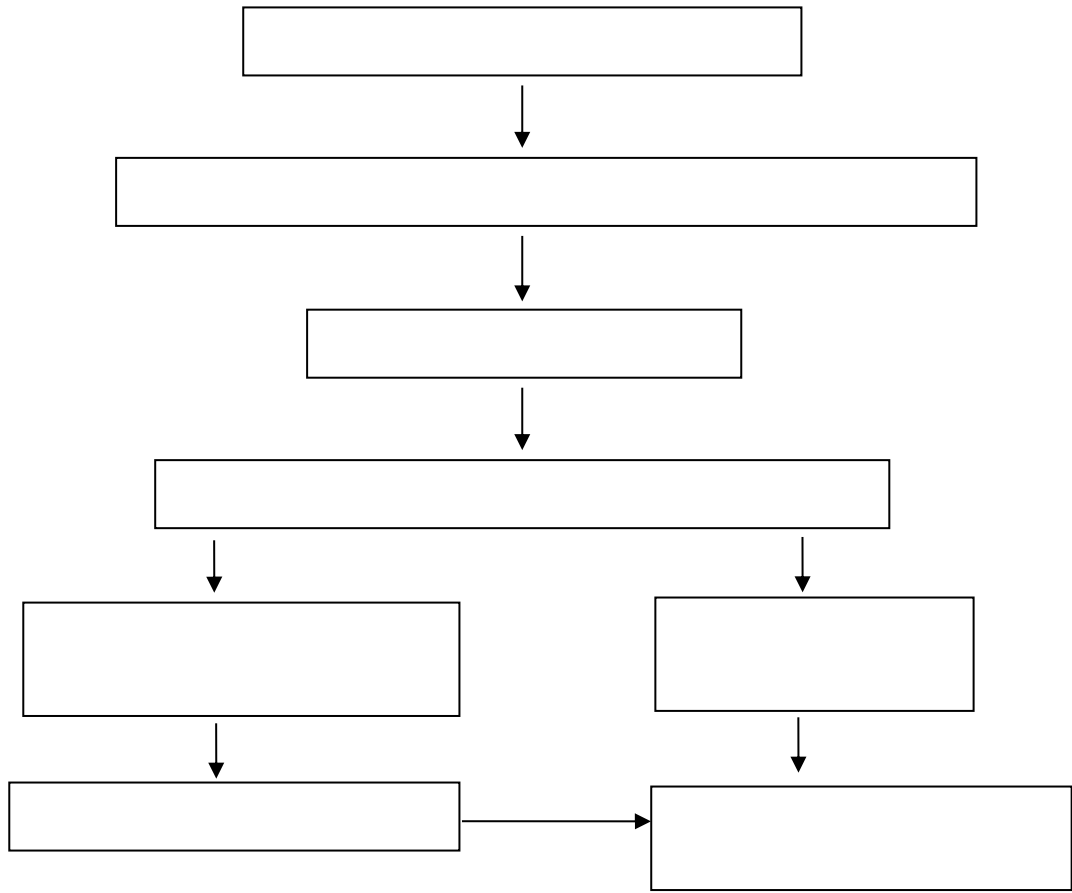
## 学生申请省级及以上学科竞赛奖励流程



# 各类教改项目申报流程

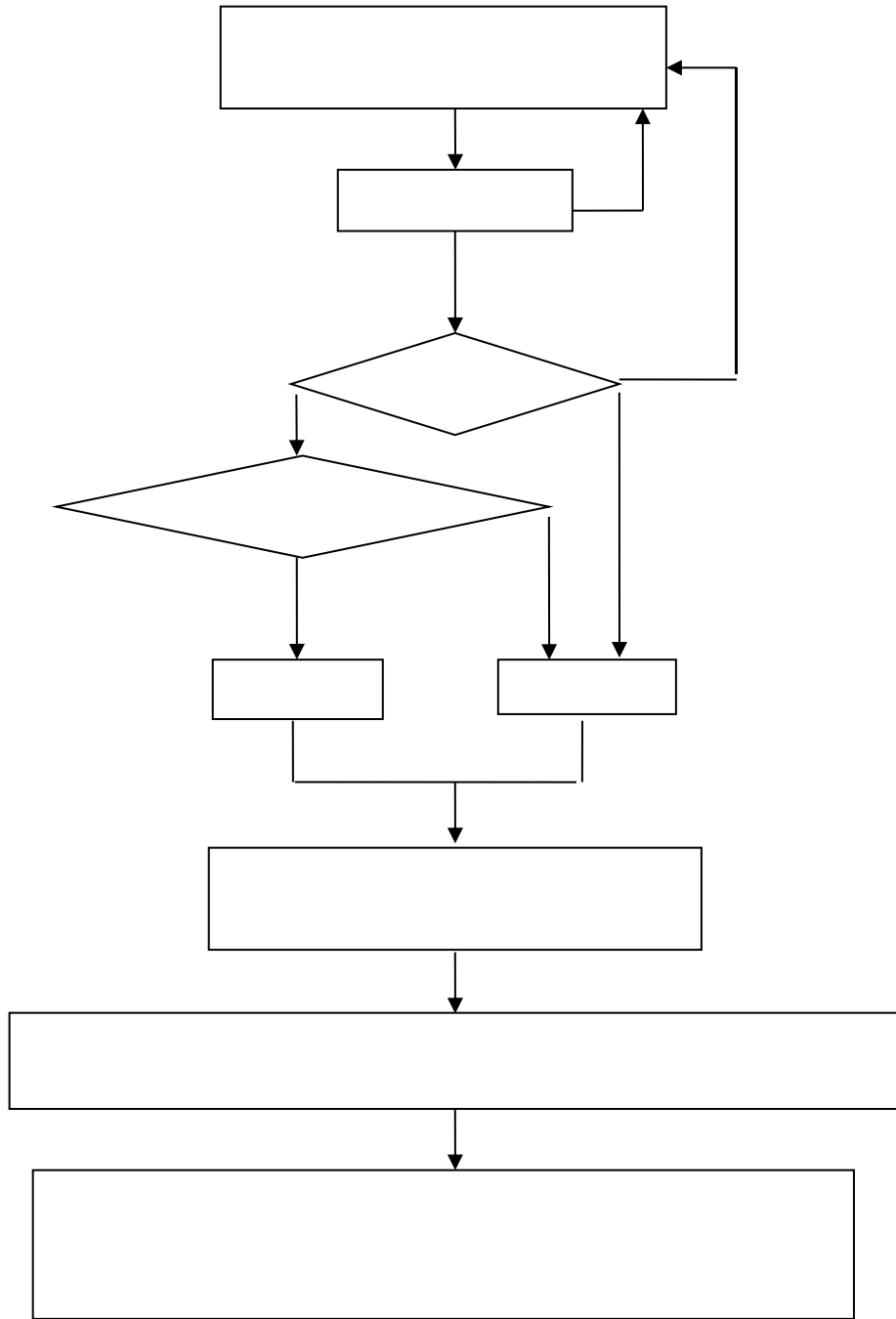


# 教学竞赛活动流程



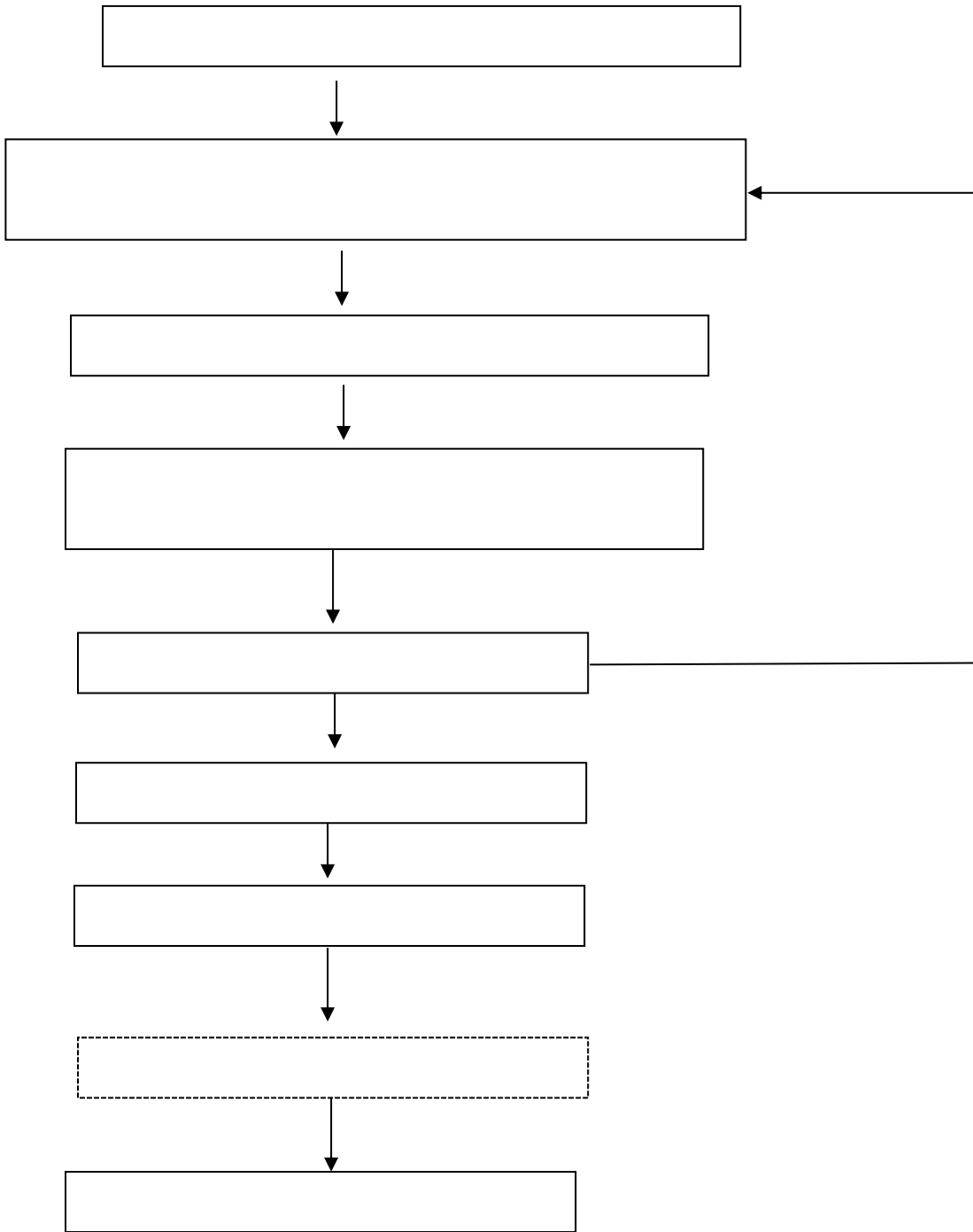


# 大学生创新创业训练计划项目管理流程图

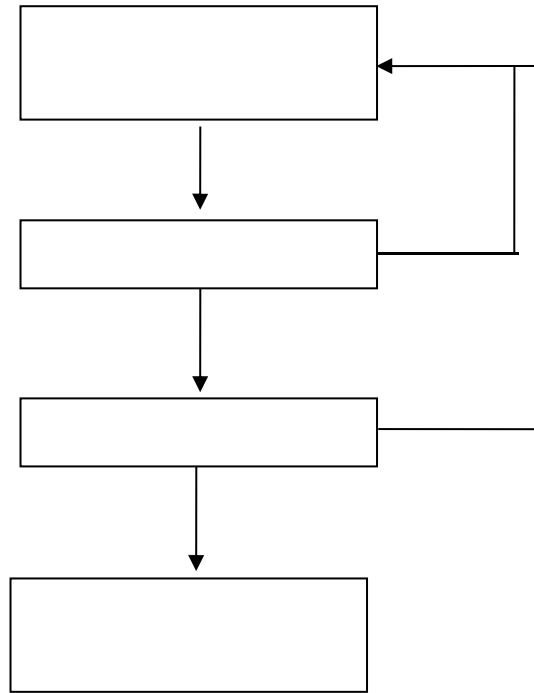




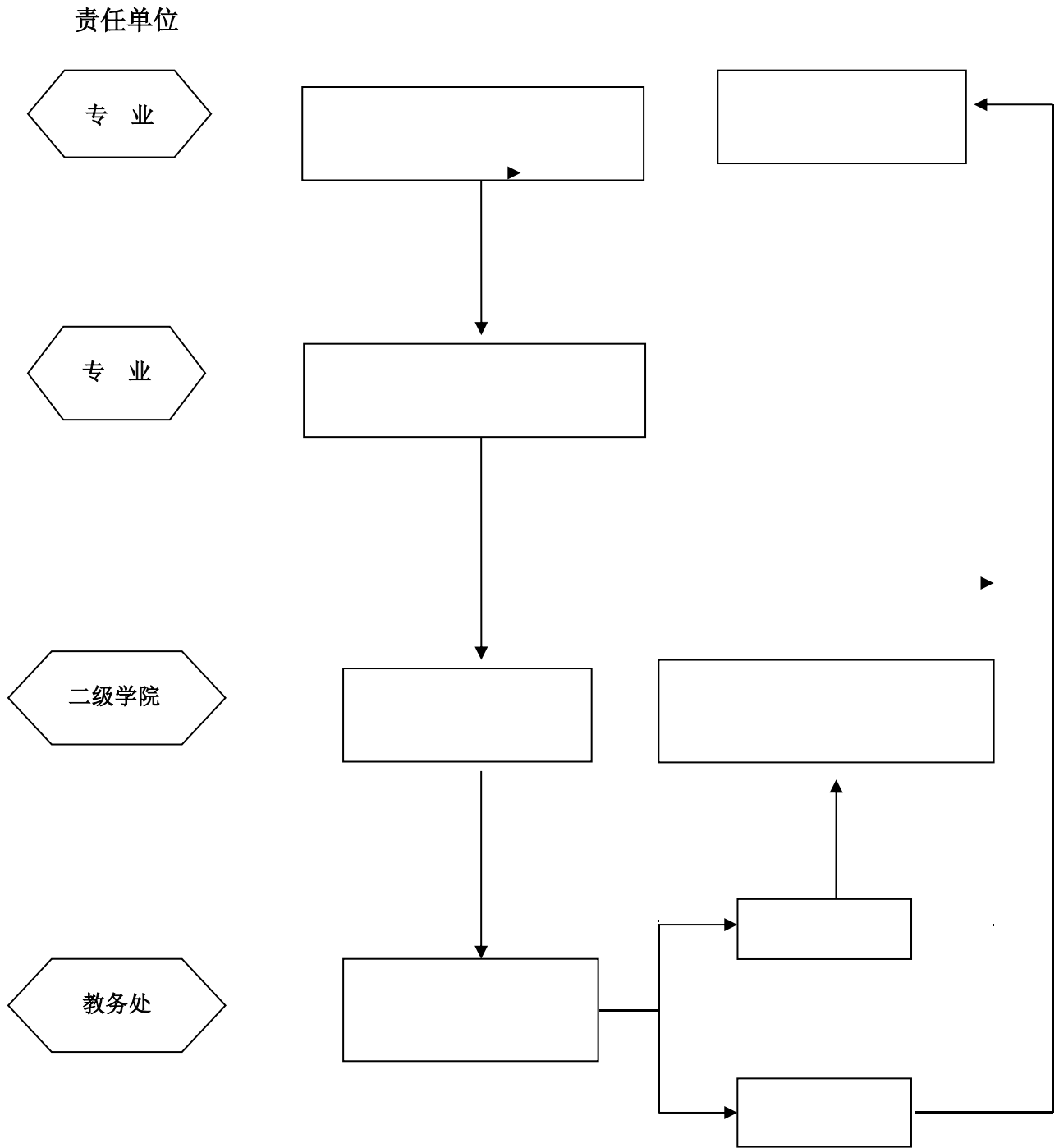
# 教学设备采购项目申报工作流程图



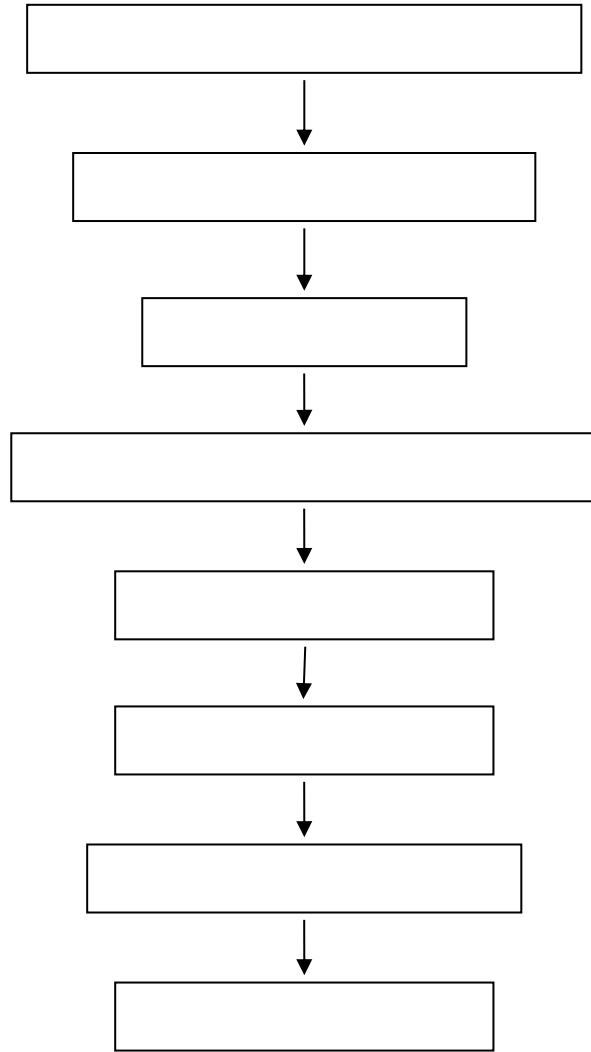
# 教学实验用房调配流程图



# 实践教学基地建设工作流程图



# 教材业务运行工作流程



# 教材采供管理流程图

